


# Tools (engine processing, assembly related)

**L-shaped rocker arm removal tool**



**Rocker arm without loosening pivot adjustment screw**  
This is a special L-shaped tool that can be attached and detached with one touch. Place the tool over the rear of the rocker arm. Simply push the lever forward to easily pivot the side. Lift it up and slide it sideways to remove it. This will greatly reduce your work time. It will increase your efficiency.

¥8,000



**Air Router** ¥15,000 Long carbide burr (for port polishing) ¥14,500

By using an adapter, both 6j and 3j shafts can be used, and it is suitable for all polishing work such as port polishing, combustion chamber processing, and connecting rod tightening.



An essential item for port polishing. With just this one tool, you can remove the thickness around the IN and EX ports and valve guides.



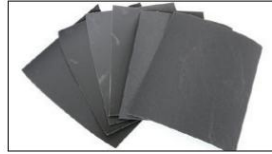
**Carbide burr (for combustion chamber machining) (6j shaft)**  
A ¥5,000  
B ¥7,400

This carbide burr is suitable for changing the complex combustion chamber shape of an L-type engine. It is also suitable for valves and spark plugs.



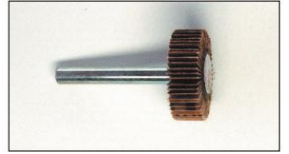
**Carbide bar (for connecting rod processing)** ¥11,600

Cut the side of the connecting rod with a cross-cut die for cutting steel. Unlike a sander, this is a cutting process, so there is little thermal deformation.



**Cloth paper (230 x 280 mm) #100**  
#180 #240 #320 #400 #600

Repairing the surface of the block and head, removing scratches on rocker arms. A cloth type that is less likely to tear than paper, such as when polishing exhaust ports.



**Flap wheel small (6j shaft) #80 #100**  
#120 ¥700

(Flap size: 30jx10 Total length: 52) For the final finishing of the intake port. Therefore, make it finer.



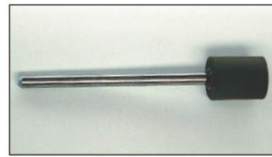
**Long flap wheel (6j shaft) #80 #100 #120**  
¥1,200

(Flap size: 30jx10 Total length: 100) Convenient for polishing the inner part of the intake manifold and intake port. Long specification.



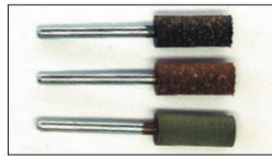
**Large flap wheel (6j shaft) #80 #100**  
#120 ¥1,000

(Flap size: 30jx25 Total length: 65) For processing the sides of connecting rods. Ideal for finishing after sanding.



**Long rubber grindstone (for ports)**  
6j shaft #120 #240 ¥800

(Wheel size: 20jx25 Total length: 110) For intermediate finishing after rough machining with a carbide bar.

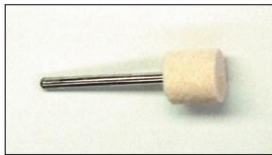


**Rubber grindstone (for combustion chamber)**  
3j shaft #120 #320 #400 (grind size: 8jx20 total length: 50) For intermediate finishing after rough machining with carbide bar. Inside of connecting rod. Also good for polishing.



**Ceramic whetstone (3j shaft)** ¥400

#80 #120 #180 #220 #320 (Whetstone size: 8jx20 Total length: 50) A convenient whetstone for easily finishing the mirror finish of the combustion chamber. Surface finishing is possible.



**Felt puff (3j shaft) ¥700**  
(Puff size: 13jx13 Total length: 47)

Felt puff (6j shaft) ¥1,000  
(Puff size: 20jx25 Total length: 60) \*For final mirror finish



**Pikar (250g)** ¥850

It is used to polish aluminum and is suitable for combustion chambers. Just apply it to a cloth and rub it to get a nice shine.



**Blue stick 110g ¥1,000**

Metal polishing agent equivalent to approximately #3000. Ideal for polishing to a mirror finish on connectors, connecting rods, combustion chambers, etc.



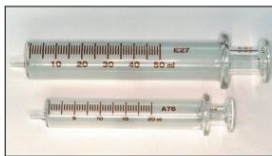
**Nissan Engine Blue** ¥1,500

It is resistant to oil and heat and is ideal for painting cylinder blocks. Genuine blue spray for users who are particular about genuine colors - It is.



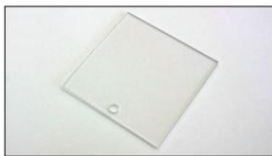
**Valve spring compressor (lever type)** ¥7,000

Valve springs and valve seals can be installed on the car without removing the head. Can be exchanged. \*Use by applying air pressure through the plug hole (For L-type, A-type, K-type, etc. OHC and CHV)



**Glass syringe (for measuring combustion chamber volume) 20cc ¥2,300 50cc ¥3,600**

Head gasket thickness and head surface grinding for compression ratio adjustment. An essential measuring tool for quantity selection.



**Acrylic plate for measurement** ¥1,800

Can be used to measure combustion chamber volume and remove piston tops. Acrylic sheet.



**Valve compound (fine)** ¥1,700

Valve lapping compound is used to lodge the valve and seat. Used to smooth out the contact surface of the ring.



**Valve octopus rod 25j 30j 35j ¥500 each**

Use a valve grinding rod to grind the valves into 3 pieces according to the valve size. Variety available.



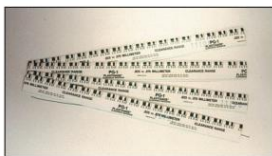
**Valve spring compressor (hook type)** ¥18,000

A lever that can compress the spring with one action - hook. (For L-type, A-type, K-type, etc. OHC)



**Digital scale (maximum weighing capacity 1kg/unit)** ¥6,900

0.5g) For precise weighing of pistons, connecting rods, rocker arms, etc. Amount balancing is possible. (4 D batteries required)



**Plastigauge (4 pieces) (for measuring oil clearance)** ¥3,700

Insert a thread-like gauge into the gap between the metal and the crank. The clearance can be measured from the degree of compression. (0.025 to 0.076 mm)



**Plate type torque wrench (20 to 130N·m)** ¥15,000

Conventional plate type bolts that cannot be controlled by preset. The elongation of the steel can also be confirmed. (Equivalent to 2 to 13 kg/m)



**Piston ring expander (suitable for 50-100mm)** ¥4,270

It can be installed safely and securely without putting any strain on the piston ring.



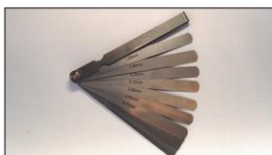
**Oil stone (for chamfering)** ¥700

Piston rings, connecting rod caps, main caps. For chamfering corners such as.



**Piston ring compressor (for 50 to 125j)** ¥2,800

Required for smooth insertion of the piston into the cylinder tool.



**Thickness gauge ¥4,600**  
(0.03-1.0mm, total length: 150mm) 18-piece set of long, easy-to-hold pieces. It can also be used to easily check clearance.



**Dial Gauge 80mm Extension Rod 8m** ¥9,000  
¥1,500

Essential tool for valve timing. With a 20mm stroke, it can also handle high lifts.



**Magnet Base** ¥6,000

A convenient magnet for fixing dial gauges. The page can be firmly fixed without shaking.



**KAMEARI Baltai protractor ¥8,000**  
(Made of 200j aluminum) The large diameter of 200mm makes the memory easy to see. It is easy to understand as it is labeled INEX OPEN/CLOSED.



**L-type chain tensioner stopper ¥4,000**

The tensioner does not pop out when replacing the cam. A helpful tool for plugging and unplugging. Made of plastic, it is easy to insert and remove.



**Clutch centering tool for Nissan ¥3,000**

This eliminates the troublesome centering work required when replacing the clutch disc. (For L-type, FJ20, CA, RB, VG, SR20, S20)



**Timing light (full-transistor/CDI/MDI compatible)** ¥9,850

Battery-powered, no battery required. Even when reinforced, it responds reliably and displays accurate ignition timing. (Masu)



**Liquid Gasket** ¥2,900

Liquid gasket ideal for assembling engines, transmissions, and differentials. The gasket begins to harden in about 5 minutes after application.



**LM48 Engine assembly spray ¥3,800**

Liquid viscosity spray lubricant for pistons, metals, cams. Used when assembling valves, etc. to maintain lubricity for a long period of time.

ツール