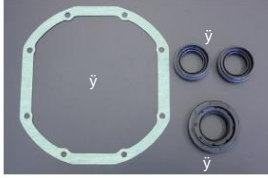


R180/R200, 71B/71C, clutch release parts



R200 Diff Parts
 ¥Pinion oil seal ¥980 ¥Side oil seal ¥430/1pc
 ¥Diff cover gasket ¥2,400



R200 LSD friction disc
 Product code: 38433-N3211
 Price: ¥900



R180 Differential Parts
 ¥Pinion oil seal ¥900 ¥Side oil seal ¥1,030/
 each ¥Diff cover gasket ¥2,180



R180 LSD friction disc
 Part number: 38433-
 RS610 Thickness:
 1.90mm Price: ¥2,700



Nissan R180 Bolt Type Conversion Parts
 •Parts for converting circlip type differentials to bolt type for use on GC10 and S30. Note: Not compatible with Subaru R180. ¥6,000/1SET



R180•R200 drain plug
 Price: ¥380
 *Magnet included



R180•R200 Filler plug
 Price: ¥220



R180 differential bearing set
 Price: ¥11,260
 ¥ Pinion F, Taper Brg ¥ Pinion
 R, Taper Brg ¥ Side taper Brg
 x 2 ¥ Pinion ball Brg



R200 differential bearing set
 Price: ¥16,940
 ¥ Pinion F, Taper Brg ¥ Pinion
 R, Taper Brg ¥ Side taper Brg
 x 2 ¥ Pinion ball Brg



R200/R180 Differential parts
 R200 R180
 ¥Breather ¥310 ¥Pinion lock nut ¥1,490 ¥S30
 ¥Retainer O-ring SET ¥540



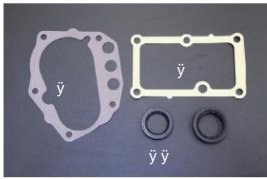
71C Main drive gear set
 (Standard number of teeth: 31/22) ¥30,700
 Nissan genuine product suitable for R32
 Type M, Silvia Ks 2ND, 3RD double cone



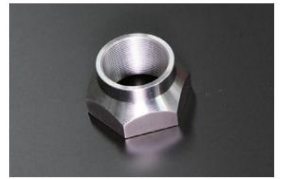
71B Shift lever boots
 Part number: 32862-
 E9300 Suitable for: S30, S130, GC10-
 R30, etc. Price: ¥310



71B Shift lever side bush
 Fits: 71B transmission
 S30, GC10-R30, C130 etc. Price: ¥130/
 each



71C, 71B Packing and Seals
 ¥ Front oil seal ¥ Rear oil seal ¥280
 seal ¥ Front cover ¥430
 gasket ¥ 71C Shift housing ¥990
 gasket
 (R32 Type M ¥470 Silvia ¥830)



71B Main shaft lock nut "compatible"
 FS5C71B (240 cross, etc.)
 FS5W71B (positive
 thread) Price: ¥2,000



71B Drain plug
 Price: ¥380
 *Magnet included



71B Filler plug
 Price: ¥340



L-type 71C 1-2 speed shift rod
 This is a necessary part when installing a 71C transmission
 on an L-type vehicle. (The tip has been machined.)
 Price: ¥9,830 *Includes parts and processing costs



Speedometer gear (71B/71C) Note: 71B is
 compatible with lower fixed type.
 ¥18T (blue) ¥1,400 ¥19T ¥2,070
 (white) ¥1,400 ¥20T ¥2,070
 (red) ¥1,400 ¥22T (orange) ¥2,070
 (red) ¥1,400



L-type sleeve & bearing set Standard
 bearing + 24mm sleeve ¥4,170
 Standard bearing + 28mm sleeve ¥4,570



L-type sleeve & bearing set L-type clutch sleeve 16mm ¥2,710 26mm ¥3,040
 OS Twin TSA (24mm) ¥6,200
 OS Twin TSA2D (18mm) ¥8,330
 OS Twin TSA2BD (16mm) ¥6,990



L-shaped clutch sleeve C-clip L-shaped clutch fork & boots SET
 Compatible: L-type 16mm to 32mm sleeve Price:
 ¥340



*1mm thicker, reinforced type that is resistant to cracks.
 Suitable for: All L-type vehicles (automatic
 adjustment type). Price: ¥4,500



Nissan Clutch Release Bearing
 Part Number: 40751S ¥1,910
 ¥Compatibility (standard) L6 A type FJ20
 ¥size
 D=74.5 d=40 T=19 B¥17 C=62



Nissan Clutch Release Bearing Part
 Number: 451S ¥4,370 ¥Compatible
 (Standard) S20 G7
 ¥size
 D=74 d=45 T=18 B¥15 C=55



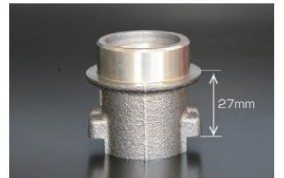
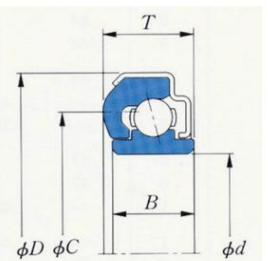
Nissan Clutch Release Bearing Part
 Number: 4067L1 ¥3,940 ¥Compatible
 with OS Twin & Triple
 (Standard) U20 L4 *Size
 D=67 d=40 T=18.5 B=12.2 C=44



Toyota clutch release bearing Part
 number: 4067A2 ¥3,250 ¥Compatible
 (standard) 2TG late model 18RG 4AG
 ¥size
 D=67 d=40 T=19.8 B¥16 C=50



Toyota clutch release bearing Part
 number: 38SL1 ¥2,660
 ¥Compatible (standard) 21G early model
 ¥size
 D=67 d=38.1 T=16.5 B=16.5 C=48



A12 Clutch sleeve (27mm)
 ¥1,900
 ¥ Conforms to A12 standard product.
 A14.A15 with chromium lightweight flywheel
 Needs to be replaced when fitted.