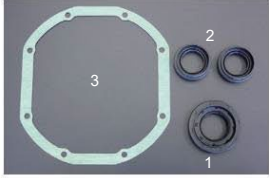


Machine Translated by Google

R180/R200, 71B/71C, clutch release parts

R180/R200 71B/71C Clutch Release Parts



R200 Diff Parts (Updated 2026.4.6)
 1.Pinion oil seal ¥980
 2.Side oil seal ¥520/1pc
 3.Diffcover gasket ¥2,510



R200 LSD friction disc
 Product code: 38433-N3211
 Price: ¥2,500 (Updated 2025.4.9)



R180 Differential Parts (Updated 2025.10.30)
 1.Pinion oil seal ¥900
 2.Side oil seal ¥1,030/each
 3.Diff cover gasket ¥1,310



R180 LSD friction disc
 Part number: 38433-RS610
 Thickness: 1.90mm
 Price: ¥2,700



Nissan R180 Bolt Type Conversion Parts
 - Parts for converting circlip type differentials to bolt type for use on GC10 and S30.
 Note: Not compatible with Subaru R180.
 ¥6,000/1SET



R180/R200 drain plug
 Price: ¥400
 *Magnet included (Updated 2026.4.6)



R180-R200 Filler plug
 Price: ¥230
 (Updated 2026.4.6)



R180 differential bearing set
 Price: ¥11,260
 1.Pinion F. Taper Brg
 2.Pinion R. Taper Brg
 3.Side taper Brg x 2
 4.Pinion ball Brg



R200 differential bearing set
 Price: ¥16,940
 1.Pinion F. Taper Brg
 2.Pinion R. Taper Brg
 3.Side taper Brg x 2
 4.Pinion ball Brg



R200/R180 Differential parts

	R200	R180
1.Breather	¥320	¥330
2.Pinion locknut	¥1,560	¥360
3.Retainer O-ring SET		¥540

 (Updated 2026.4.6)



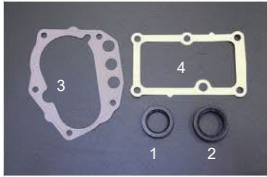
71C Main drive gear set
 (Standard number of teeth: 31/22) ¥30,700
 Nissan genuine product suitable for R32 Type M, Silvia Ks 2ND, 3RD double cone



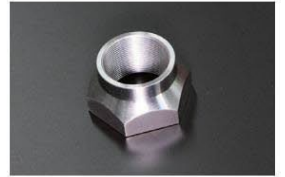
71B Shift lever boots
 Part number: 32862-E9300 Suitable for: S30, S130, GC10-R30, etc. Price: ¥310



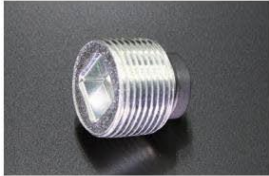
71B Shift lever side bush
 Fits: 71B transmission S30, GC10-R30, C130 etc. Price: ¥290/each (Updated 2026.4.6)



71C, 71B Packing and Seals (Updated 2026.4.6)
 1.Front oil seal ¥470
 2.Rear oil seal ¥430
 3.Front cover gasket ¥1,040
 4.71C Shift housing gasket (R32 Type M ¥490 Silvia ¥870)



71B Main shaft lock nut
 compatible F55C71B (240 cross, etc.) F55W71B (positive thread) Price: ¥2,000



71B Drain plug
 Price: ¥400
 *Magnet included (Updated 2026.4.6)



71B Filler plug
 Price: ¥880
 *Stainless steel products (Updated 2026.02.09)



L-type 71C 1-2 speed shift rod
 This is a necessary part when installing a 71C transmission on an L-type vehicle. (The tip has been machined.)
 Price: 9,830 *Includes parts and processing costs



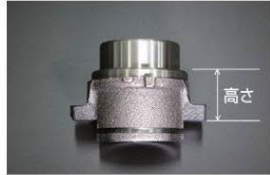
Speedometer gear (71B/71C)
 Note: 71B is compatible with lower fixed type.
 1. 18T(blue) ¥2,070 4. 21T(purple) ¥2,070
 2. 19T(white) ¥1,400 5. 22T(orange) ¥2,360
 3. 20T(red) ¥1,400 (Updated 2025.07.20)



L-type sleeve & bearing set Standard
 bearing + 24mm sleeve ¥4,280
 Standard bearing + 28mm sleeve ¥4,700 (Updated 2026.4.6)



L-type sleeve & bearing set
 OS Twin TS2A (24mm) ¥6,310
 OS Twin TS2AD (18mm) ¥8,530
 OS Twin TS2BD (16mm) ¥8,300 (Updated 2026.4.6)



L-type clutch sleeve (Updated 2026.4.6)

16mm	¥4,000	26mm	¥4,430
18mm	¥4,230	28mm	¥2,430
20mm	¥1,830	30mm	¥4,360
22mm	¥1,760	32mm	¥2,360
24mm	¥2,010		



L-shaped clutch sleeve C-clip (Updated 2026.4.6)
 Compatible: L-type 16mm to 32mm sleeve Price: ¥360



L-shaped clutch fork & boots SET
 *1mm thicker, reinforced type that is resistant to cracks. Suitable for: All L-type vehicles (automatic adjustment type). Price: ¥4,500



Nissan Clutch Release Bearing Part Number: 40751S ¥1,910
 *Compatibility (standard) L6 A type FJ20
 *size D=74.5 d=40 T=19 B=17 C=62



Nissan Clutch Release Bearing Part Number: 451S ¥4,370
 *Compatible (Standard) S20 G7
 *size D=74 d=45 T=18 B=15 C=55



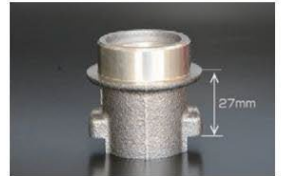
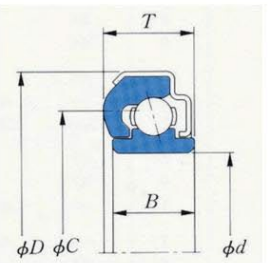
Nissan Clutch Release Bearing Part Number: 4067L1 ¥3,940
 *Compatible with OS Twin & Triple (Standard) U20 L4
 *size D=67 d=40 T=18.5 B=12.2 C=44



Toyota clutch release bearing Part number: 4067A2 ¥3,250
 *Compatible (standard) 2TG late model 18RG 4AG
 *size D=67 d=40 T=19.8 B=16 C=50



Toyota clutch release bearing Part number: 38SL1 ¥2,660
 *Compatible (standard) 2TG early model
 *size D=67 d=38.1 T=16.5 B=16.5 C=48



A12 Clutch sleeve (27mm) (Updated 2026.4.6) ¥1,990
 *Compatible with A12 standard product. A14.A15 with chromium lightweight flywheel Needs to be replaced when fitted.