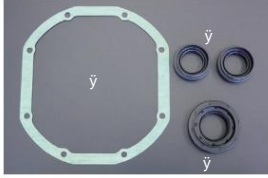


R180/R200, 71B/71C, clutch release parts



R200 Diff Parts

Pinion oil seal ¥980 Side oil seal ¥430/1pc
Diff cover gasket ¥2,400



R200 LSD friction disc

Product code: 38433-N3211
Price: ¥900



R180 Differential Parts

Pinion oil seal ¥900 Side oil seal ¥1,030/
each Diff cover gasket ¥2,180



R180 LSD friction disc

Part number: 38433-RS610
Thickness: 1.90mm Price: ¥2,700



Nissan R180 Bolt Type Conversion Parts

- Parts for converting circlip type differentials to bolt type for use on GC10 and S30. Note: Not compatible with Subaru R180.
¥6,000/1SET



R180/R200 drain plug

Price: ¥380

*Magnet included



R180/R200 Filler plug

Price: ¥220



R180 differential bearing set

Price: ¥11,260

Pinion F, Taper Brg Pinion R, Taper Brg Side taper Brg x 2 Pinion ball Brg



R200 differential bearing set

Price: ¥16,940

Pinion F, Taper Brg Pinion R, Taper Brg Side taper Brg x 2 Pinion ball Brg



R200/R180 Differential parts

Breather ¥310 Pinion lock nut ¥1,490 S30
Retainer O-ring SET ¥540



71C Main drive gear set

(Standard number of teeth: 31/22) ¥30,700
Nissan genuine product suitable for R32 Type M, Silvia Ks 2ND, 3RD double cone



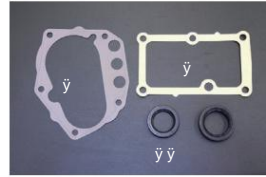
71B Shift lever boots

Part number: 32862-E9300 Suitable for: S30, S130, GC10-R30, etc. Price: ¥310



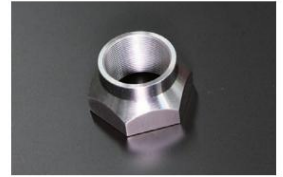
71B Shift lever side bush

Fits: 71B transmission S30, GC10-R30, C130 etc. Price: ¥130/each



71C, 71B Packing and Seals

Front oil seal Rear oil seal ¥280
Front cover seal ¥430
71C Shift housing gasket ¥990
(R32 Type M #470 Silvia #830)



71B Main shaft lock nut "Compliant"

FS5C71B (240 cross, etc.)
FS5W71B (positive thread) Price: ¥2,000



71B Drain plug

Price: ¥380

*Magnet included



71B Filler plug

Price: ¥340



L-type 71C 1-2 speed shift rod

This is a necessary part when installing a 71C transmission on an L-type vehicle. (The tip has been machined.)
Price: ¥9,830 *Includes parts and processing costs



Speedometer gear (71B/71C) Note: 71B is compatible with lower fixed type.

18T (blue) ¥2,070 19T (white) ¥1,400 20T (red) ¥1,400
21T (purple) ¥2,070 22T (orange) ¥2,070



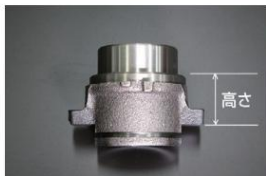
L-type sleeve & bearing set Standard

bearing + 24mm sleeve ¥4,170
Standard bearing + 28mm sleeve ¥4,570



L-type sleeve & bearing set L-type clutch sleeve 16mm ¥2,710 26mm ¥3,040

OS Twin TSA (24mm) ¥6,200
OS Twin TSA2D (18mm) ¥8,330
OS Twin TS2BD (16mm) ¥6,990



L-shaped clutch sleeve C-clip L-shaped clutch fork & boots SET

Compatible: L-type 16mm to 32mm sleeve Price: ¥340



*1mm thicker, reinforced type that is resistant to cracks. Suitable for: All L-type vehicles (automatic adjustment type). Price: ¥4,500



Nissan Clutch Release Bearing Part Number: 40751S

Compatibility (standard) L6 A type FJ20

Size D=74.5 d=40 T=19 B ϕ 17 C=62



Nissan Clutch Release Bearing Part Number: 451S

Compatible (Standard) S20 G7

Size D=74 d=45 T=18 B ϕ 17 C=55



Nissan Clutch Release Bearing Part Number: 4067L1

Compatible with OS Twin & Triple (Standard) U20 L4 *Size

Size D=67 d=40 T=18.5 B=12.2 C=44



Toyota clutch release bearing Part number: 4067A2

Compatible (standard) 2TG late model 18RG 4AG

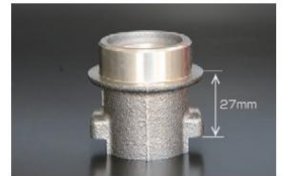
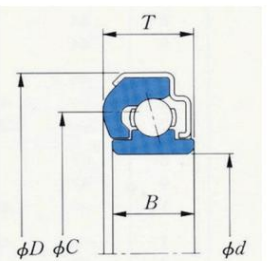
Size D=67 d=40 T=19.8 B ϕ 16 C=50



Toyota clutch release bearing Part number: 38SL1

Compatible (standard) 2TG early model

Size D=67 d=38.1 T=16.5 B=16.5 C=48



A12 Clutch sleeve (27mm)

¥1,900

Conforms to A12 standard product. A14.A15 with chromium lightweight flywheel Needs to be replaced when fitted.

KAMEARI