

KAMEARI RACING METER

Meter



100φ Smith Classic Tachometer

[Specifications]

Type: Electric
 Display range: 0 - 10,000 rpm
 Face plate color: Black
 Illumination: Colorless
 Outer diameter: 100φ

¥56,000
 (Updated 2026.03.16)

*100φ aluminum meter panel ¥2,000



60φ Fuel pressure gauge (black & blue)

[Specifications]

Type: Mechanical Bourdon type
 Display range: 0 - 0.8 kg/cm²
 Face plate color: Black & dark blue
 Illumination: Blue
 Outer diameter: 60φ

¥13,000 (reinforced stainless steel mesh hose sold separately)
 (Updated 2026.01.08)



Supports a maximum pressure of 130kg/cm² or more! This reinforced hose boasts outstanding durability compared to conventional rubber hoses. A high-performance hose with excellent pressure resistance, abrasion resistance, and aesthetics, with a Teflon tube as the base and stainless steel mesh wrapped around it. (Can also be used for hydraulic gauges)

Fuel pressure gauge reinforced stainless steel mesh hose	
Length 1.5m Product number: 190002	length 2.0m Part number: 190003
¥6,000	¥6,500



3-way joint
Product code: 190005
¥3,000 (Updated 2026.03.16)



60φ meter panel
Product code: 190004
¥1,000 (Updated 2026.01.08)

part that is inserted into the middle of the fuel hose and connected to the reinforced stainless steel mesh hose.



52φ Oil pressure gauge

[Specifications]

Type ... Mechanical Bourdon type
 Display range... 0-10kg/cm²
 Face plate color ... Black
 Illumination ... Blue
 Outer diameter ... 52φ

¥11,000
 (Reinforced stainless steel mesh hose sold separately)
 (Updated 2026.01.08)

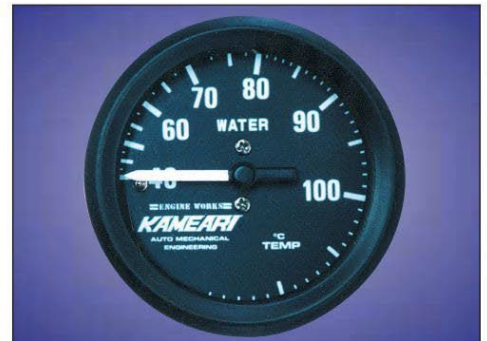


52φ Oil temperature gauge

[Specifications]

Type: Mechanical Bourdon type
 Display range: 50 - 130°C
 Face plate color: Black
 Illumination: Blue
 Outer diameter: 52φ
 Sensor: M16×1.5 (length 2m)

¥14,000
 (Updated 2026.01.08)



52φ Water temperature gauge

[Specifications]

Type: Mechanical Bourdon type
 Display range: 40-115°C
 Face plate color: Black
 Illumination: Blue
 Outer diameter: 52φ
 Sensor: M16×1.5 (2m long)

¥14,000
 (Updated 2026.01.08)



Oil pressure gauge reinforced stainless steel mesh hose	
1.0m Product number: SUP-010	
¥5,000	
1.5m Part Number: SUP-015	
¥6,000	
2.0m Product number: SUP-020	
¥6,500	
3.0m Product number: SUP-030	
¥7,500	
4.0m Product number: SUP-040	
¥8,500	



52φ meter panel	
1 hole panel Part number: M-002-1	¥600
2 hole panel Part number: M-002-2	¥850
3 hole panel Part number: M-002-3	¥1,000
4 hole panel Part number: M-002-4	¥1,200



52φ compound gauge	
LAMCO METER	
Black	¥9,000 White ¥9,000

[Specifications]
 Type ... Mechanical
 Display range ... 76cm/hg-0-1.1kg/cm²
 Face Plate color ... Black/White
 Illumination ... Blue
 Size ... 52φ×55 (depth)
 Accessories ... 4φ hose-3-prong



52φ boost gauge	
LAMCO METER	
Black	¥9,000 White ¥9,000

[Specifications]
 Type ... Mechanical
 Display range ... 0-1.1kg/cm²
 Face Plate color ... Black/White
 Illumination ... Blue
 Size ... 52φ×55 (depth)
 Accessories ... 4φ hose-3-prong



52φ Digital Clock	
LAMCO METER	
	¥8,000

[Specifications]
 Type ... Mechanical
 Display range ... 24 hours
 Face Plate color ... Black
 Font illumination ... Green
 Size ... 52φ×75 (depth)