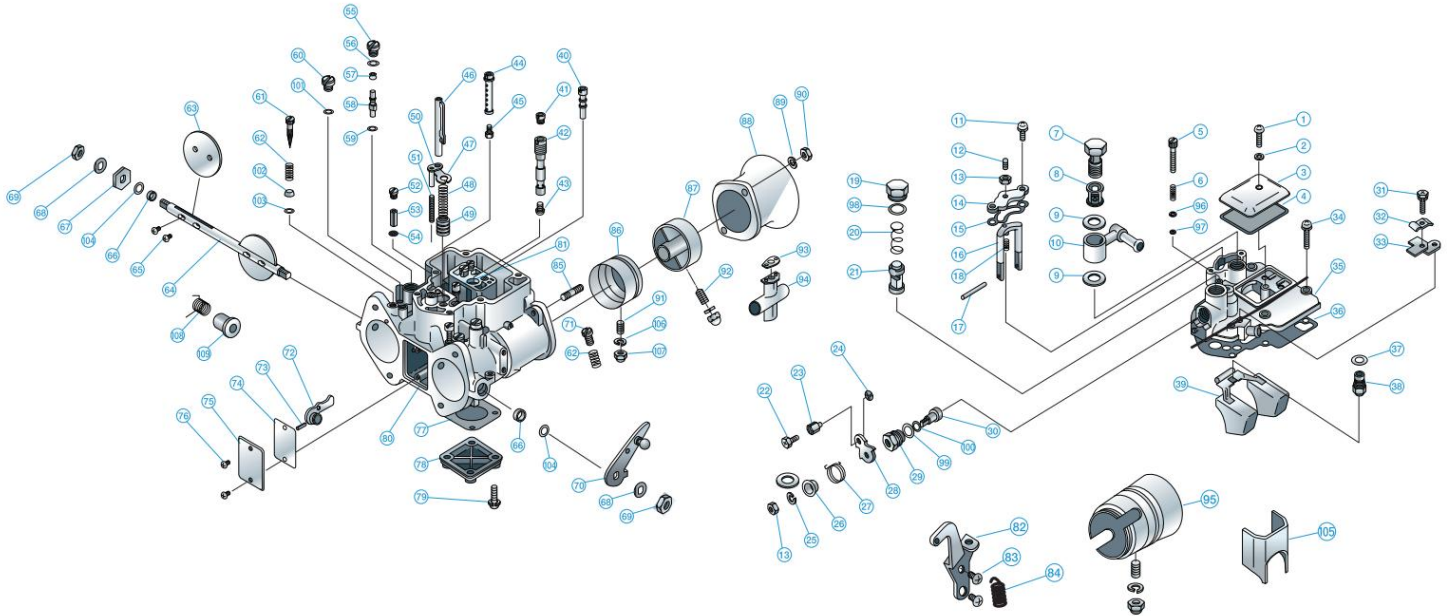


# OER 45-50ý exploded view and parts list



Index	Part Number	Parts	Quantity	Price (yen)	Notes
1	R812-1525	name Screw, jet cover	1		
2	R351-1050	Washer, jet cover	1	60	
3	8820-0060	Jet cover Jet	1	700	
Four	8804-0080	cover gasket Pump adjustment	1	240	P
Five	8810-0110	screw	1	460	
6	8818-0090	Stopper spring	1	180	
7	8810-0050	Banjo bolt Fuel filter	1	1,000	
8	8815-0010	Fuel union gasket	1	540	
9	8809-0090	Fuel Union L Left	2	140	R
Ten	8805-0060	Fuel Union L right Fuel union T both		3,400	
Ten	8805-0050	Fuel union L right Fuel union T both		3,400	
Ten	8805-0070	ends Screen, adjust cover		3,700 60	
11	R812-1510		2		
12	8810-0190F	Float adjust screw Nut, adjust Float	1	180	
13	R411-4005	adjust cover Adjust cover gasket	1-2	90	
14	8820-0160	cover gasket	1	360	
15	8804-0040		1	240	P
16	8850-0020	Float support Float	1	700	
17	8820-0150	pin Float	1	120	
18	8818-0010	adjustment spring	1	140	
19	8810-0060	Retainer bolt	1	500	
20	8818-0050	Starter valve spring Starter valve	1	150	
21	8850-0090	Terminal screw	1	3,200 250	
22	R771-5010		1		
Twenty-two	8810-0100	Wire Terminal	1	200	
Twenty-two	R612-0004	E-ring	1	60	
Twenty-two	R471-0050	Spring washer Spring	1	60	
26	8808-0040	retainer	1	500	
27	8818-0030	Starter lever spring (left) Starter lever	1	500	
27	8818-0031	spring (right) Starter lever shaft plug		600	
28	8804-0010		1	1,500	
29	8810-0070		1	1,100	
29	8810-0071	Shaft plug Chokeless starter valve		1,200	
30	8802-0010	shaft Left Starter valve shaft Right	1	2,000	
30	8802-0011	Wire bracket ASSY		2,000	
31/33	8803-0010A			2,400 60	
34	R812-1525	Screw, chamber cover Float chamber	6		
35	8820-0020	cover Chamber cover gasket	1	4,800	
36	8809-0011		1	1,150 120	P
37	8809-0060	Needle valve gasket Needle	1		R
38	8850-0130	valve assembly Float assembly Pilot	1	3,300	R
39	8850-0010 8863-ýý	jet	1	4,000 550	
40	ýý		2		
41	8862-ýýýý	Air jet Emulsion	2	480	
42	8820-0242	tube S Emulsion tube R	1	3,000	
42	8820-0243	Emulsion tube T	1	3,000	
42	8820-0244		1	3,000 480	
43	8861-ýýýý	Main jet Starter	2		
44	8820-0040	bleed pipe Starter jet Pump rod	1		
45	8864-00**		1	800	
46	8850-0040		1	1,800 180	
47	8808-0020	Pump Washer Pump	1		
48	8818-0020	Spring Plunger	1	360	
49	8850-0030		1	1,500 800	
50	8850-0120	Pump stopper	1		
51	8818-0100	Pump stopper spring Pump weight	1	180	
52	8810-0030	plug Pump weight	2	180	
53	8820-0100		2	180	
54	8820-0370	Pump check ball Pump	2	100	R
55	8810-0010	nozzle plug	2	300	
56	R020-1006 8865-	O-ring, pump nozzle plug Pump	2	240	R
58	****	nozzle	2	700	
59	8809-0020	Pump nozzle gasket Bypass	2	70	R
60	8810-0020	hole plug	2	360	

\*Please note that parts without an index number are not disassembled. \*Index numbers 40, 41, 42, 43, 58, 86 have sizes, so please specify.

Index	Part Number	Part	Quantity	Price (yen)	remarks
61	8810-0090	Name Pilot Screw	2	300	R
62	8818-0070	Adjustment Spring	2	150	R
63/66	Not for sale			Not for sale	
67	8808-0010	Spacer collar Lock		160	
68	8808-0030	washer	1 2	60	
69	8810-0140	Throttle shaft nut Throttle	2	150	
70	8850-0050	lever Throttle lever	1	1,500	
70	8850-0050L	reverse Throttle adjustment		3,000 250	
71	8810-0200	screw	1		
71	8810-0201	Throttle adjust screw Pump lever		250	
72	8850-0060	Spring pin	1	2000 120	
73	8820-0340		1		
74	8809-0030	Gaskets, shield plates	1	180	P
75	8812-0010	Shield plate screw,	1	1,000	
76	8810-0180	shield plate gasket, bottom cover	2	80	
77	8809-0050		1	240	P
78	8820-0050	Bottom Cover	1	900	
79	R812-1520 Not	Screw, bottom cover	Four	80	
80	for sale			Not for sale	
81	8867-0000	Check valve assembly	1	sale 720	
82	8803-0040	Throttle lever bracket Throttle		950	
82	8803-0040L	lever bracket Reverse Screw, bracket		1,500	
83	8810-0210	Throttle lever spring		180	
84	8818-0081			300	
85	4514-0612	Stud bolt Bolt, for	Four	200	
85	8810-0220	50ý funnel Outer venturi for 45ý	Four	200	
86	8819-45**	Outer venturi for 47ý Outer venturi for	2	3,300	
86	8819-47**	50ý	2	3,800	
86	8819-50**		2	4,000	
87	8820-0270	Inner Venturi Air funnel,	2	3,500	
88	8819-4550	45ý50mm Air funnel, 47ý50mm Air	2	4,000	
88	8819-4750	funnel, 50ý35mm Spring washer Nut	2	4,000	
88	8819-5035		2	7,500	
89	R471-0060		Four	60	
90	R414-4006		Four	80	
91	8810-0160	Set screw		180	
92	8810-0170	Set screw Gasket,		180	
93	8809-0110	inner venturi Inner venturi, for 50ý	2	120	50yP
94	8820-0310		2	3,000	
95	Not for sale			Not for sale	
96	8808-0090	Washer, Adjusting screw	1	180	T
97	8809-0130	O-ring, pump adjustment screw		120	T
98	8809-0170	O-ring, retainer bolt		180	R
99	8809-0160	O-ring, shaft plug	1	180	R
100	8809-0150	O-ring, starter valve shaft	1	150	R
101	8809-0180	O-ring, bypass hole plug washer, pilot	2	150	R
102	8808-0080W	screw	2	220	T
103	8809-0140	O-ring, pilot screw	2	150	T
104	8808-0070	Lock washer Baffle	2	220	
105	8818-0120	plate Gasket, fiber	1	2,500 120	
106	8809-0190				T
107	8810-0240F	Flange Nut	Four	150	
107	8810-0240	Cap nut Center		300	T
108	8818-0130	return spring Center spring		1,100	
109	8808-0080S	retainer		1,100	

\*The "T" in the remarks column indicates parts for turbo.

\* The parts marked "P" and "R" in the set part remarks column can also be purchased in the following sets. Set

Part number	Part name	Packing set for 45ý and 47ý	Packing set	Price (yen)
P	OPCK-0045	for 50ý	Repair kit for 45ý	1,900
	OPCK-0050			1,900
R+P	OREP-0045			6,500
	OREP-0047	Repair kit for 47ý	Repair kit for	6,500
	OREP-0050	50ý		6,500