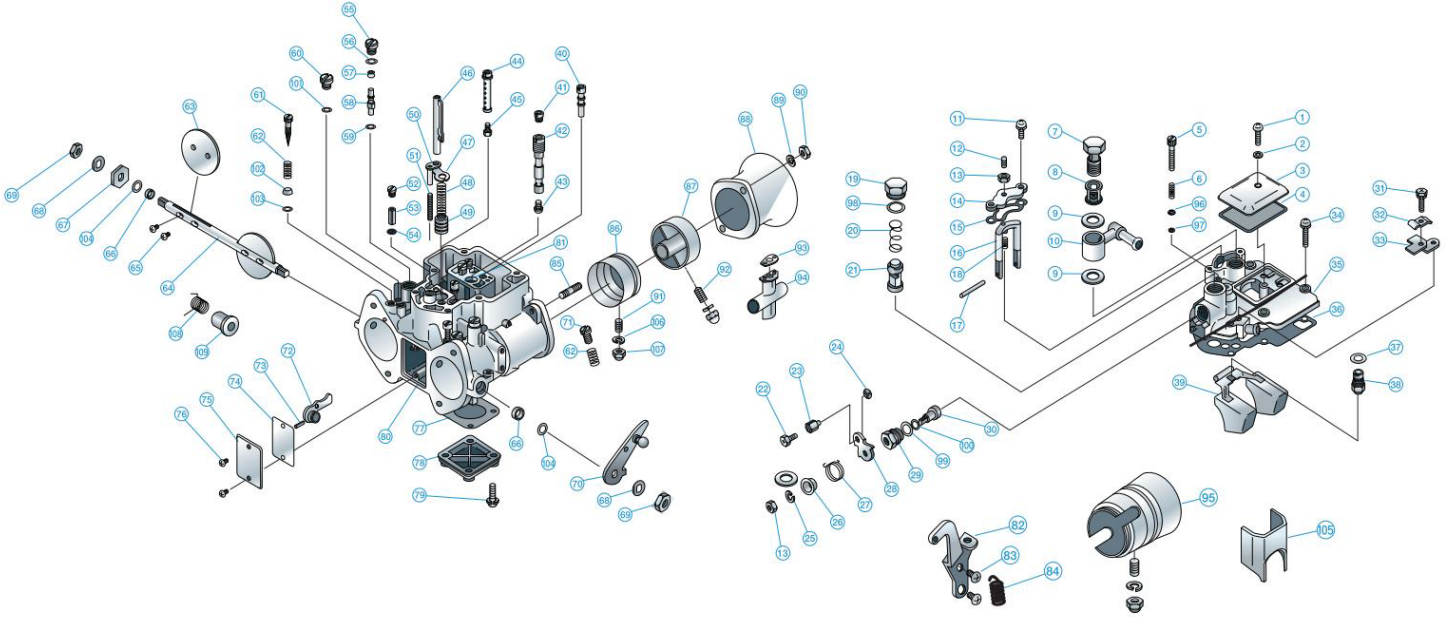


OER 45-50φ exploded view & parts list



OER 45-50φ Exploded View & Parts list

Index	Part Number	Part Name	Quantity	Price (yen)	Remarks
1	R812-1525	Screw, jet cover	1	95	
2	R351-1050	washer, jet cover	1	80	
3	8820-0060	Jet cover,	1	950	
4	8804-0080	jet cover gasket,	1	260	P
5	8810-0110	pump adjustment screw	1	550	
6	8818-0090	Stopper spring	1	200	
7	8810-0050	banjo bolt	1	1,000	
8	8815-0010	Fuel filter,	1	750	
9	8809-0090	fuel union gasket,	2	140	R
10	8805-0060	Fuel union L (left)		3,600	
10	8805-0050	Fuel union L (right)		3,600	
10	8805-0070	Fuel union T(double-ended)		4,000	
11	R812-1510	Screw, Adjust Cover,	2	80	
12	8810-0190F	Float Adjust Screw,	1	200	
13	R411-4005	Nut, Adjust	1	100	
14	8820-0160	Float Adjust Cover,	1	400	
15	8804-0040	Adjust Cover Gasket	1	270	P
16	8850-0020	Float support,	1	850	
17	8820-0150	float pin,	1	150	
18	8818-0010	float adjust spring,	1	160	
19	8810-0060	retainer bolt,	1	850	
20	8818-0050	starter valve spring	1	150	
21	8850-0090	Starter valve	1	3,200	
22	R711-5010	terminal screw	1	250	
23	8810-0100	Wire terminal	1	200	
24	R612-0004	E-ring	1	60	
25	R471-0050	spring washer	1	60	
26	8808-0040	Spring retainer,	1	500	
27	8818-0030	starter lever spring (left)	1	500	
27	8818-0031	starter lever spring (right)	1	600	
28	8804-0010	starter lever	1	1,500	
29	8810-0070	shaft plug,	1	1,100	
29	8810-0071	shaft plug (for chokeless starter),	1	1,200	
30	8802-0010	Starter valve shaft (left)	1	2,000	
30	8802-0011	Starter valve shaft (right),	1	2,000	
31-33	8803-0010A	wire bracket ASSY	2,400		
34	R812-1525	screw, chamber cover,	6	90	
35	8820-0020	float chamber cover,	1	5,500	
36	8809-0011	chamber cover gasket	1	1,250	P
37	8809-0060	Needle valve gasket,	1	120	R
38	8850-0130	needle valve assembly	1	3,800	R
39	8850-0010	Float assembly,	1	4,500	
40	8863-****	pilot jet,	2	630	
41	8862-****	air jet	2	580	
42	8820-0242	Emulsion tube S	1	3,600	
42	8820-0243	Emulsion tube R	1	3,600	
42	8820-0244	Emulsion tube T	1	3,600	
43	8861-****	Main jet	2	580	
44	8820-0040	Starter bleed pipe	1	-	
45	8864-00**	Starter jet	1	950	
46	8850-0040	pump rod	1	2,000	
47	8808-0020	Pump washer,	1	200	
48	8818-0020	pump spring,	1	400	
49	8850-0030	plunger,	1	1,800	
50	8850-0120	pump stopper,	1	950	
51	8818-0100	pump stopper spring	1	200	
52	8810-0030	Pump weight plug,	2	200	
53	8820-0100	pump weight,	2	200	
54	8820-0370	pump check ball	2	120	R
55	8810-0010	pump nozzle plug	2	360	
56	R020-1006	O-ring, pump nozzle plug	2	280	R
58	8865-****	Pump nozzle,	2	780	
59	8809-0020	pump nozzle gasket	2	120	R
60	8810-0020	Bypass Hole Plug	2	390	

Index	Part Number	Part Name	Quantity	Price (yen)	Remarks
61	8810-0090	Pilot screw	2	360	R
62	8818-0070	adjustment spring	2	200	R
63-66		Not for sale			Not for sale
67	8808-0010	Spacer collar	1	180	
68	8808-0030	lock washer	2	80	
69	8810-0140	Throttle shaft nut,	2	200	
70	8850-0050	throttle lever	1	1,800	
70	8850-0050L	Throttle lever (reverse),		3,200	
71	8810-0200	throttle adjustment screw,	1	320	
71	8810-0201	throttle adjustment screw,		320	
72	8850-0060	pump lever,	1	2,500	
73	8820-0340	spring pin	1	150	
74	8809-0030	Gasket, shield plate,	1	180	P
75	8812-0010	shield plate,	1	1,500	
76	8810-0180	screw, shield plate,	2	100	
77	8809-0050	gasket, bottom cover,	1	300	P
78	8820-0050	bottom cover	1	1,100	
79	R812-1520	Screw, bottom cover	4	100	
80		Not for sale			Not for sale
81	8867-0000	Check valve ASSY	1	950	
82	8803-0040	throttle lever bracket,		950	
82	8803-0040L	reverse throttle lever bracket,		1,800	
83	8810-0210	Screw, bracket,		250	
84	8818-0081	throttle lever spring		360	
85	4514-0612	Stud bolts,	4	250	
85	8810-0220	bolts for 50φ funnels,	4	250	
86	8819-45**	outer venturi for 45φ	2	3,800	
86	8819-47**	outer venturi for 47φ	2	4,200	
86	8819-50**	outer venturi for 50φ	2	4,500	
87	8820-0270	inner venturi,	2	4,500	
88	8819-4550	Air funnel, 45φ50mm,	2	4,500	
88	8819-4750	Air funnel, 47φ50mm	2	4,500	
88	8819-5035	Air funnel, 50φ 35mm	2	8,500	
89	R471-0060	spring washer	4	90	
90	R414-4006	Nut,	4	90	
91	8810-0160	set screw,		200	
92	8810-0170	set screw,		200	
93	8809-0110	gasket, inner venturi,	2	150	50φP
94	8820-0310	inner venturi, for 50φ	2	3,200	
95		Not for sale			Not for sale
96	8808-0090	Washers, adjustment screws	1	200	T
97	8809-0130	O-ring, pump adjustment screw	1	150	T
98	8809-0170	O-rings, retainer bolts	1	200	R
99	8809-0160	O-ring, win plug	1	200	R
100	8809-0150	O-ring, starter valve shaft	1	180	R
101	8809-0180	O-ring, bypass hole plug	2	180	R
102	8808-0080W	washer, pilot screw	2	250	T
103	8809-0140	O-ring, pilot screw	2	180	T
104	8808-0070	lock washer	2	250	
105	8818-0120	Baffle plate	1	3,000	
106	8809-0190	gasket, fiber		150	T
107	8810-0240F	flange nut	4	180	
107	8810-0240	Cap nut,		400	T
108	8818-0130	center return spring		1,250	
109	8808-0080S	Center spring retainer		1,250	

*In the remarks column, "T" indicates a part for the turbo.

*The parts marked "P" and "R" in the set parts remarks column can also be purchased in the following sets.

Set Part Number	Part name	Price (yen)
P	OPCK-0045 Gasket set for 45φ and 47φ	2,100
	OPCK-0050 Gasket set for 50φ	2,100
R+P	OREP-0045 Repair kit for 45φ	6,800
	OREP-0047 Repair kit for 47φ	6,800
	OREP-0050 Repair kit for 50φ	6,800

*Please note that parts without an index number are not designed to be disassembled. *For index numbers 40, 41, 42, 43, 58, and 86, please specify the size you require.