

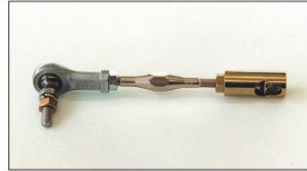
Intake Manifold Parts



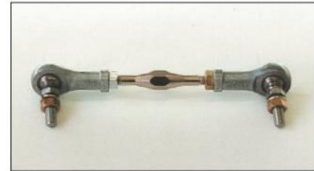
(Ball center distance 100mm)
•STD turnbuckle (gold) ¥2,600
The gold part is made of brass, which is resistant to cracking and easy to attach and remove. (Both sides have right-handed threads.)



(Ball center distance 127mm)
•Long turnbuckle (gold) ¥3,500
Components of the 2TG linkage kit. The gold parts are made of brass, which is resistant to cracking and easy to attach and detach. (Both sides are positive threaded type)



•Turnbuckle (single-sided) ¥3,700
In the case of Solex, we recommend a single-sided ball bearing type, since the ball on the carb side cannot be removed. One side has a reverse thread, so the length can be adjusted while it is attached to the engine.



•Turnbuckle (double ball joint) ¥4,400 By using ball joints on both sides, the trouble of ball joints coming off during sports driving is eliminated. One side has a reverse thread, so the length can be adjusted while still attached to the engine.



Aluminum push lever ¥10y each ¥2,500
Standard item included in the intake manifold kit
*Aluminum products



Center distance: 40mm and 50mm, 2-hole type
•Reinforced push lever (with ball joint) 8y10y ¥3,700 each
The combination of steel levers and chromium-reinforced bolts eliminates problems caused by loosening or misalignment.



Center distance: 40mm and 50mm, 2-hole type
•Reinforced push lever (without ball joint) 8y10y ¥3,000 each
The combination of a steel lever and a chromium-reinforced bolt eliminates problems caused by loosening or misalignment.



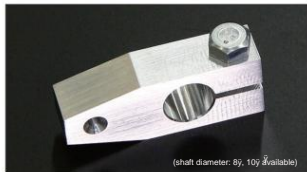
•Ball joint ¥700 A part that is attached to the tip of the push lever.



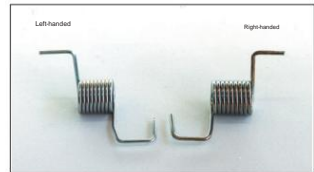
•Adjustment lever (facing left) ¥1,850 (shaft diameter: 10y) Required of the throttle opening using the push lever.



•Adjustment lever (facing right) (shaft diameter: 10y) Required when fine-tuning the throttle opening using the push lever. ¥1,850



•Return lever 8y10y each ¥2,200
A lever that adjusts the strength of the return spring.



•Return spring ¥700
The throttle return spring is available in right-handed and left-handed versions depending on the engine model.



•Ougi Lever (shaft diameter: 8y, 10y available) ¥3,500 each
A lever that operates the throttle with a wire. Available for Nissan and Toyota.



•L-shaped wire holder ¥1,800
There are different types of brackets for holding wires depending on the engine model.



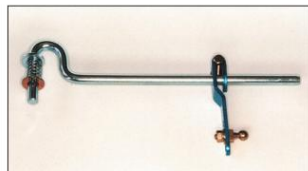
•Teflon bushing (shaft diameter: 10y) Used for the sliding part of the stainless steel bar. Two pieces are required for one intake manifold. (For bush-type intake manifolds) ¥900



•E-ring (shaft diameter: available in 8y and 10y) Used to lock the stainless steel. 8y ¥80 10y ¥120



•U-shaped joint ¥3,500
Steel joint parts. (For L4 and L6)



•L6 joint (with aluminum push lever) ¥7,500
A component part of the L6 rod-type intake manifold, this is a joint part that drives the linkage with the rod.



•L6 joint (with reinforced push lever) ¥8,700
Reinforced push lever prevents lever from slipping even during intense acceleration



•Wire type L6 joint ¥8,500
Used for vehicles that use wires to drive the L6 joint



(For Harada Shokai intake manifold)
•Steember
•L6 1001 ¥4,000
•L6 1002 ¥4,000
•A type, L4, FJ20, Z20, 4K, 4AG ¥3,800



•Intake manifold stud bolt for mounting the carburetor ¥380/each
*Nuts and washers included



•Master back hose connector ¥460
*Joint size: 10y-1/4 (for mounting to intake manifold)



•Pillow end (for pillow linkage)
•For 8y stainless steel bar ¥2,900
•For 10y stainless steel bar ¥2,900



(SOLEX, WEBER, OER)
•40y insulator packing ¥Thickness 1.0mm ¥300/each
•Black insulator for 40y ¥Thickness 6.0mm ¥2,900/1 piece



(SOLEX, WEBER, OER)
•44-45y insulator packing ¥Thickness 1.0mm ¥300/1 piece
•44-45y insulator black ¥Thickness 6.0mm ¥2,900/1 piece



(SOLEX, WEBER, OER)
•50y insulator packing ¥Thickness 1.0mm ¥300/each
•50y insulator black ¥Thickness: 6.0mm ¥3,400/each



(SOLEX, WEBER, OER)
•50y Extra thick insulator set ¥3,500/1pc
*8.3mm insulator x 1, 1.0mm insulator packing x 2