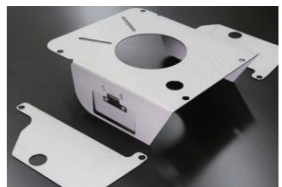


AE86 Large capacity aluminum oil pan



(Compatible with 86/92/101/111/7A blocks) *Vertical installation

Price ¥109,000



By changing from the original press mold to an aluminum casting, the assembly time is reduced.

Improved engine block rigidity.

- * The amount of oil has been increased by widening both sides of the front part.
- * The internal baffle has partitions on both sides to prevent the oil from shifting to one side.
- Fins on both the inside and outside enhance the cooling effect.
- * The bottom shape is the same as the genuine oil pan, so you can use the genuine oil pan.

This allows the engine to be lowered just like before.

* By changing the flange shape, 86/92/101/111 (including 7A) blocks can be used.

We can accommodate all of your needs.

*The genuine baffle plate attached to the bottom of the block can also be installed.

It is a design that is.

*For 86 blocks, cutting is required.

* There are also return holes for blow-by/oil return on both sides of the upper front side.

We have set up a system.

*Return pipe and dedicated flange are optional. ¥4,090

* Comes with a heat-resistant (200y) neodymium oil drain bolt.

4AG Main part tightening torque (Toyota service data)

(Tightening torque unit: kg-cm)

Item	Engine type	4 A-GEU
Cylinder block x	Water Pump	8mm 150±30 6mm 95± 20
	Engine Mounting Bracket	250±40(M8 bolt) 350±50(M8 nut) 475±75(M10)
	Oil Filter Union	450±50
	Oil pan	50±15
	Oil Pump	175y260
	Timing Belt Idler	375±75
	Alternator bracket	8 mm 350±50 11mm 475±75
	Crankshaft Bearing Cap	610±50
	cylinder head	610±50
	Timing Belt Cover No.1	95±20
	Rear oil seal retainer	95±20
	Timing belt cover No.4	95±20
Cylinder Head x	Intake manifold	220±30
	Water Outlet Housing	175y260
	Exhaust manifold	250±30
	Distributor	200±30
	Camshaft bearing cap	130±15
	Cylinder Head Cover	60±20
	Spark plug	180±30
	Timing belt cover No.4	95±20
	Rear end plate	175±25
Timing belt cover No.2	95±20	
Intake manifold x vacuum sensor	Cold Start Injector	75±15 (Volts) 150±30 (Union bolt)
		250±50
	Gas Filter	150±30
	Surge tank stay	220±30
Crankshaft x	Crankshaft Pulley	1200±100
	Flywheel	750±50
Camshaft x	Camshaft Timing pulley or gear	475±75
Connecting rod x connecting rod cap		415±35
Oil pan x drain plug		350±50
Alternator x Alternator bracket		475±75