

2TG Overhaul parts

2TG 1,626cc 86ÿ forged street piston (regular specification)



ÿPiston specifications

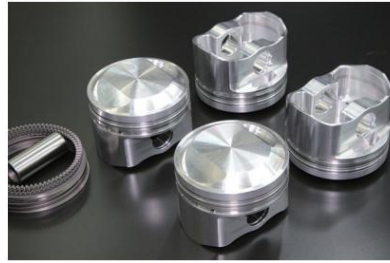
•Type: High compression •Manufacturing method: Forged and machined •Piston diameter: ÿ86 •Displacement: 1,626cc •Compression ratio: 9.0:1 •Piston head height: 4.7mm •Pin height: 39.0mm •Pin diameter x length: ÿ22 x 52mm •Piston ring thickness: 1.5-1.5-2.8mm •Piston weight: 321g •Piston pin weight: 85g •Valve recess: Compatible with STD valves •Connecting rod used: 2TG STD •Crank used: 2TG STD

Note:

This piston is for hemispherical combustion chambers only. It cannot be used with laser heads (multi-spherical combustion chambers). It is necessary to insert a bush into the small end of the connecting rod and perform full floating processing.

ÿ Price ¥92,000

2TG 1,626cc 86ÿ forged street piston (high octane spec)



ÿPiston specifications

•Type: High compression •Manufacturing method: Forged and machined •Piston diameter: ÿ86 •Displacement: 1,626cc •Compression ratio: 9.8:1 •Piston head height: 7.0mm •Pin height: 39.0mm •Pin diameter x length: ÿ22 x 52mm •Piston ring thickness: 1.5-1.5-2.8mm •Piston weight: 328g •Piston pin weight: 85g •Valve recess: Compatible with STD valves •Connecting rod used: 2TG STD •Crank used: 2TG STD

Note:

This piston is for hemispherical combustion chambers only. It cannot be used with laser heads (multi-spherical combustion chambers). It is necessary to insert a bush into the small end of the connecting rod and perform full floating processing.

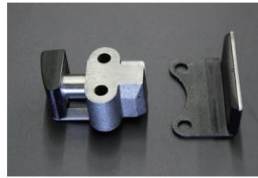
ÿ Price ¥92,000



2TG Standard Valve Compatible: 2T-G/
2T-GEU Size: IN: 44.5ÿ EX:
38.5ÿ Price: ¥3,000/each ¥24,000/each



2TG STD valve seat ring
Specification: High strength sintered alloy (lead-free) Compatibility: For standard valves Price: ¥16,000/unit



2T-G Primary tensioner compatibility:
2T/2T-G/2T-GEU
Price: Primary tensioner ¥3,700 Primary chain guide ¥900



2TG STD valve guide Compatible with: 2TG, 18RG
Material: Cast iron (same as genuine product) Price: ¥12,000/unit ¥1,500/unit



2TG Reinforced Head Bolt Set
Compatible with: 2TG, 18RG Material: Chrome molybdenum steel Price: ¥19,000/unit



2TG Alternator Bracket
Specification: Chrome finish
Compatibility: Compatible with genuine alternator to black alternator Price: ¥2,500



2TG Big valve seat ring
Specification: High strength sintered alloy (lead-free) Compatibility: For 45/40.5ÿ valves Price: ¥16,000/unit



2T-G Disc Cap & Rotor Part Number: 33012 (Cap outer diameter 77ÿ) Compatible with: 2T-G mid-late model Price: ¥3,380/SET



2T-G Disc Cap & Rotor
Part number: 31013 (cap outer diameter 74ÿ) Compatible with: 2T-G early model Price: ¥4,110/SET



2TG stainless steel 4-2 octopus leg Price: ¥120,000 Part number: 510-22412 (FUJITSUBO) Compatible with: TA22, TA27, TE27
Pipe outer diameter: 42.7ÿ



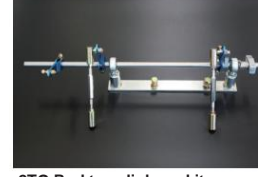
2TG Oil Pump Assy /Large
Capacity Oil Pump Assy ¥47,000
•STD oil pump assembly ¥21,000
Compatible with: TA22,
TA27 *When using with the TE27 series, the shape of the strainer part is different, so please replace it.



2TG manifold stud bolt
•2TG Early Model IN (M8 size) ¥220 EX (M8 size) ¥220
•2TG Late Model IN (M8 size) ¥220 EX (M10 size) ¥230



2TG ARP reinforced connecting rod bolt
Made by ARP (USA) - ¥14,500
Torque and elongation can be controlled
A genuine reinforced bolt!



2TG Rod type linkage kit
Can be used with left lever types of SOLEX, WEBER, and OER
¥25,000



2TG Wire Linkage Kit
Can be used with left lever types of SOLEX, WEBER, and OER
¥25,000

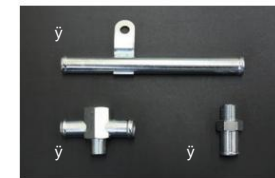
2T-G Engine main part tightening torque

Fastening point	Toyota Service Data Tightening Torque (kg-m)	Reference: Reinforced bolt tightening torque (kg-m)
Cylinder head bolts Main	7.2ÿ8.8	9.0
bearing cap bolts Connecting rod bolts	7.2ÿ8.8	
Crank pulley bolts	4.0ÿ5.0	5.0 - 5.5
Tappet cover nuts Cam	4.0 - 6.0	
bracket Mounting nuts	0.4-0.7	
Cam sprocket Center bolts	1.2-1.8	
No.2 Chain tensioner x cylinder head	7.0-8.0	14.0 to 16.0
No.1 Chain tensioner x cylinder block Intake manifold	3.0-4.0	
nut Oil pan mounting bolt Timing	1.0-1.6	
chain cover x cylinder	1.0-1.6	
block Oil pump x cylinder block Flywheel bolt Clutch cover bolt	0.5-0.8	
	1.0-1.6	
	1.7-2.6	
	7.7-8.3	13.0 to 13.5
	1.5-2.0	3.5-4.0



For TE27 2TG

ÿ•Heater connector 17-14ÿ fork ¥4,800
ÿ•Heater pipe 14ÿ straight ¥4,600
ÿ•Heater connector 14ÿ-3/8 ¥1,500



For TA22/TA17 2TG

ÿ•Heater connector 17-17ÿ fork ¥4,800
ÿ•Heater pipe 17ÿ straight ¥4,600
ÿ•Heater connector 17ÿ-3/8 ¥1,500