

2TG overhaul parts

2TG 1,626cc 86mm diameter forged street piston (regular specification)



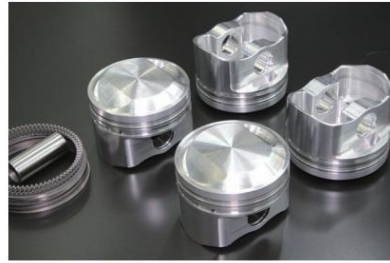
Piston specifications

- Type: High compression
- Manufacturing method: Forged and machined
- Piston diameter: φ86
- Displacement: 1,626cc
- Compression ratio: 9.0:1
- Piston head height: 4.7mm
- Pin height: 39.0mm
- Pin diameter x length: φ22x52mm
- Piston ring thickness: 1.5-1.5-2.8mm
- Piston weight: 321g
- Piston pin weight: 85g
- Valve recess: Compatible with STD valves
- Connecting rod used: 2TG STD
- Crank used: 2TG STD

Note:
This piston is designed specifically for hemispherical combustion chambers.
Cannot be used with laser heads (multi-spherical combustion chambers).
Requires bushing insertion and full floating processing of the connecting rod small end.

Price: ¥105,000
(Updated 2026.01.01)

2TG 1,626cc 86mm diameter forged street piston (high-octane specification)



Piston specifications

- Type: High compression
- Manufacturing method: Forged and machined
- Piston diameter: φ86
- Displacement: 1,626cc
- Compression ratio: 9.8:1
- Piston head height: 7.0mm
- Pin height: 39.0mm
- Pin diameter x length: φ22 x 52mm
- Piston ring thickness: 1.5-1.5-2.8mm
- Piston weight: 328g
- Piston pin weight: 85g
- Valve recess: Compatible with STD valves
- Connecting rod used: 2TG STD
- Crank used: 2TG STD

Note:
This piston is designed specifically for hemispherical combustion chambers.
Cannot be used with laser heads (multi-spherical combustion chambers).
Requires bushing insertion and full floating processing of the connecting rod small end.

Price: ¥105,000
(Updated 2026.01.01)



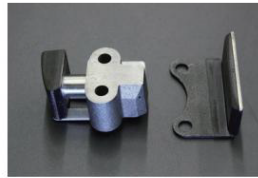
2T-G Standard Valve

Compatible: 2T-G/2T-GEU
Size: IN: 44.5φ EX: 38.5φ
Price: **¥3,000**/Single **¥24,000**/SET



2TG STD valve seat ring

Specification: High strength sintered alloy (lead-free)
Compatible: For standard valves
Price: **¥16,000**



2T-G Primary side tensioner

compatible: 2T/2T-G/2T-GEU
Price: Primary tensioner **¥3,700**
Primary chain guide **¥900**



2TG STD valve guide

Compatible with: 2TG, 18RG
Material: Cast iron (same as genuine)
Price: **¥12,000**/SET **¥1,500**/Single



2TG Reinforced Head BoltSet

Compatible: 2TG, 18RG
Material: Chrome molybdenum steel
Price: **¥19,000**



2TG alternator bracket

Specifications: Plated finish
Compatible with: Genuine alternator to black alternator
Price: **¥3,000**
(Updated 2026.03.31)



2TG Big Valve Seat Ring

Specification: High strength sintered alloy (lead-free)
Compatible: For 45/40.5φ valves
Price: **¥16,000**



2T-G Disc Cap & Rotor

Part Number: 33012 (Cap Outer Diameter 77φ)
Compatible with: 2T-G Mid-Late Model
Price: **¥3,380**/SET



2TG Disc Cap & Rotor

Part number: 31013 (cap outer diameter 74φ)
Compatible with: 2T-G initial model
Price: ~~¥4,100~~ SET (Discontinued)



2TG Stainless Steel 4-2 Octopus Foot

Price: **¥135,000** (Updated 2026.01.19)
Part Number: 510-22412 (FUJITSUBO)
Compatible with: TA22, TA27, TE27
Pipe outer diameter: 42.7φ



2TG Oil Pump Assembly

*Large Capacity Oil Pump Assembly **¥47,000**
*STD oil pump assembly **¥21,000**

Compatible with: TA22, TA27
*When using with the TE27 series, the shape of the strainer part is different, so please replace it.



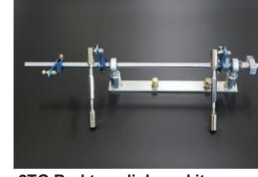
2TG manifold stud bolt

*2TG Early Model IN (M8 size) **¥220**
EX (M8 size) **¥220**
*2TG Late Model IN (M8 size) **¥220**
EX (M10 size) **¥230**



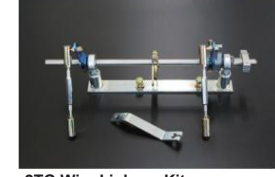
2TG ARP reinforced connecting rod bolt

Made by ARP (USA) **¥14,500**
Torque and elongation can be controlled
Authentic reinforced bolts!



2TG Rod-type linkage kit

Can be used with left-hand lever types of SOLEX, WEBER, and OER
¥25,000



2TG Wire Linkage Kit

Can be used with left-hand lever types of SOLEX, WEBER, and OER
¥25,000

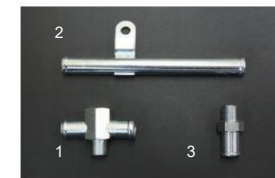
2T-G Engine Main Parts Tightening Torque

Fastening point	Toyota Service Data	Reference reinforced
	Tightening Torque (kg-m)	bolt tightening torque (kg-m)
Cylinder head bolts	7.2-8.8	9.0
Main bearing cap bolts	7.2-8.8	
Connecting rod bolts	4.0-5.0	5.0-5.5
Crank pulley bolts	4.0-6.0	
Tappet cover nuts	0.4-0.7	
Cam bracket mounting nuts	1.2-1.8	
Cam sprocket center bolts	7.0-8.0	14.0-16.0
No.2 Chain tensioner x cylinder head	3.0-4.0	
No.1 Chain tensioner x cylinder block	1.0-1.6	
Intake manifold nut	1.0-1.6	
Oil pan mounting bolt	0.5-0.8	
Timing chain cover x cylinder block	1.0-1.6	
Oil pump x cylinder block	1.7-2.6	
Flywheel bolt	7.7-8.3	13.0-13.5
Clutch cover bolt	1.5-2.0	3.5-4.0



For TE27 2TG

1•Heater connector 17-14φ fork **¥4,800**
2•Heater pipe 14φ straight **¥4,600**
3•Heater connector 14φ-3/8 **¥1,500**



For TA22/TA17 2TG

1•Heater connector 17-17φ fork **¥4,800**
2•Heater pipe 17φ straight **¥4,600**
3•Heater connector 17φ-3/8 **¥1,500**