

U20 ENGINE PARTS

U20 Standard Valve



The shape and dimensions are reproduced to be the same as the original, and the materials and heat treatment specifications have been reinforced to emphasize durability.

Compatible with: U20
(SR311) Size: IN: 46y EX: 36y
Price: ¥3,000/each ¥24,000/
each

U20 Standard Valve Guide



This is a standard valve guide that can be used for normal overhauls and head tuning. Unlike genuine Nissan products, the inner and outer diameters are already finished to standard sizes, so there is no need to incur extra processing costs for inner and outer diameter polishing. Finally, all you need to do is use a reamer to fine-tune the clearance and you're done.

¥12,000 /each unit

U20 Secondary chain tensioner



The included aluminum washer allows you to adjust the backstroke and reduce deflection of the timing chain.

* Reinforced bolts, gaskets, and 3 aluminum washers included

¥30,000

U20 Valve spring stepped seat



This stepped seat allows the use of L-type engine valve springs for the U20.

¥8,800/1 unit
¥1,100/1 piece

U20 Primary chain tensioner



This is an important part for reducing timing chain slack and stabilizing valve timing. It comes with an aluminum washer and packing to limit the backstroke.

¥10,000

*Includes gasket and 3 aluminum washers

U20 Valve spring additional washer



By placing it under the stepped sheet, you can fine-tune the installation length of the valve spring. By aiming for the optimal installation length specified for the valve spring, you can maintain the best set load and full load.

*Thickness: 0.5mm/0.8mm/1.0mm ¥350
each/sheet *Use

in combination with stepped sheets

U20 Nissan genuine rocker arm



If you notice stepped wear on the contact surface of the cam, you need to replace it immediately. If the wear progresses, it will attack the camshaft cam lobe, causing serious damage.

¥18,700 / 1 piece

U20 Low head valve oil seal

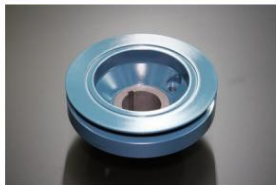


When assembling a high cam with a cam lift of 8.4mm or more, the genuine valve oil seal may not have enough stroke and may bottom out. This valve oil seal has a 3mm lower head, allowing you to increase the valve lift.

¥4,160/unit ¥520/
unit

*Use in combination with stepped sheets

U20 Crank Pulley



This street pulley is machined to have the same shape as the genuine product without compromising the appearance of the genuine product. It has been treated to prevent cracks and wear, allowing it to be used for a long time.

Price: ¥30,000

*Damperless type

U20 Reinforced valve spring SET (L-type)



This reinforced valve spring is compatible with cam lifts up to 9mm. Be sure to use it in combination with the valve spring stepped seat.

¥16,000/each unit

U20 Plated Parts



U20 Plated Oil Filler Cap

Specifications: Chrome plated finish

Price: ¥12,000

Accessories: Cork packing

U20 Plated Mechapon hole cover Specifications:

Chrome plated finish Price: ¥5,000

Accessories: Packing
& stainless steel bolt

U20 Lead-free seat ring (for STD valves)



Uses sintered alloy with excellent heat and wear resistance, allowing a stable contact surface to be maintained for a long period of time.

¥16,000/each unit

U20 Metal Head Gasket



Suitable bore size: STD to y91

Thickness/Price

- 1.2mm ¥30,000
- 1.5mm ¥33,000
- 2.0mm ¥36,000
- 2.5mm ¥39,000

U20 Primary side reinforced chain guide



The primary chain guide, which prevents the chain from flapping, is a part that is prone to cracking near the base where the chain is subjected to force. This reinforced type is a countermeasure product that connects the sides with a reinforcing plate in the areas where cracks are likely to occur.

Price: ¥12,000

* Reinforced bolts included