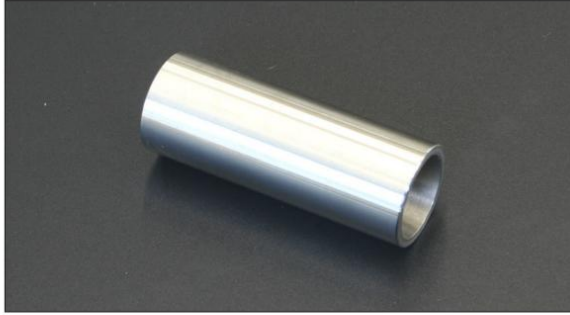


PISTON PIN & CLIP

Piston pin only



Cast piston pin for cast pistons

Model, Specifications	Part number	Pin Diameter	Pin Length	Price/1 bottle
L6 Racing L4	P21652	∅21	65.2mm	¥1,500
L6 Street use L4	P21560	∅21	56mm	¥1,500
A12	P17450	∅17.45	50mm	¥1,500
A14, A15	P19500	∅19	50mm	¥1,500
FJ20	P22600	∅22	60mm	¥1,500
2TG	P22600	∅22	60mm	¥1,500

Forged piston pin for forged pistons

Model, Specifications	Part number	Pin Diameter	Pin Length	Price/1 bottle
L6 Racing L4	P21460	∅21	46mm	¥1,500
L6 Street use L4	P21500	∅21	50mm	¥1,500
A12	P17460	∅17.45	46mm	¥1,500
A14, A15	P19460	∅19	46mm	¥1,500
S20	P22500	∅22	50mm	¥1,500
U20/R16	P22600	∅22	60mm	¥1,500
4AG (20∅)	P20460	∅20	46mm	¥1,500
4AG (18∅)	P18500	∅18	46mm	¥1,500
4K	P18500	∅18	50mm	¥1,500
2TG	P22520	∅22	52mm	¥1,500
18RG	P22520	∅22	52mm	¥1,500
G7	P22520	∅22	52mm	¥1,500
TOYOTA2000GT	P22520	∅22	52mm	¥1,500
RB20DET	P21500	∅21	50mm	¥1,500

Circlip set



Cast piston circlip set

Model, Specifications	Part number	Wire diameter	Quantity	Price/SET
L6 Race Use	C61221	diameter 1.2	12 pieces	¥1,800
L4 Racing	C41221	1.2	8 pieces	¥1,200
L6 Street use	C61421	1.4	12 pcs	¥1,800
L4 Street use	C61421	1.4	8	¥1,200
A12	C4A175	1.4	pcs	¥1,200
A14, A15	C41419	1.4	8	¥1,200
FJ20	C41422	1.4	pcs	¥1,200
2TG, 18RG	C41422	1.4	8 pcs 8 pcs	¥1,200

Forged piston circlip set

Model, specifications	Part number	Wire diameter	Quantity	Price/SET
L6 Race/Street	C61421	1.4	12 pcs	¥1,800
L4 Race/Street	C41421	1.4	8 pcs	¥1,200
A12	C4A175	1.4	8 pcs	¥1,800
A14, A15	C41419	1.4	8 pcs	¥1,200
FJ20	C41422	1.4	8 pcs	¥1,200
S20	C61422	1.4	12 pcs	¥1,800
U20/R16	C41422	1.4	8 pcs	¥1,200
4AG (20∅ pin)	C41420	1.4	8 pcs	¥1,200
4AG (18∅ pin)	C41418	1.4	8	¥1,200
4K	C41418	1.4	pcs	¥1,200
2TG	C41422	1.4	8	¥1,200
18RG	C41422	1.4	pcs	¥1,200
G7	C61422	1.4	8 pcs 12 pcs	¥1,800
TOYOTA2000GT	C61422	1.4	12 pcs	¥1,800
RB20DET	C61421	1.4	12 pcs	¥1,800