

γL30-L32
 γ88.5/89.25/89.5/90

γL24.L26.L28 γ86/86.5/87

L-type forged racing piston

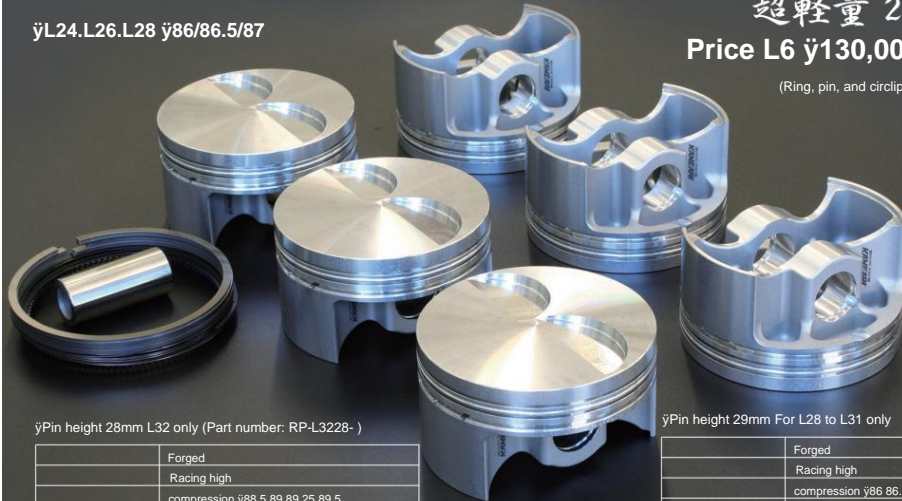
超軽量 290g

Price L6 γ130,000

(Ring, pin, and circlip included)

鍛造への拘り

鍛造に拘る理由がある。鍛えられた素材。レースで戦うために鍛えられた素材。高精度を追求するがゆえに。抜ける配を廃止した新製法。ピンボスの負担を軽減する為の。高温高速回転域でもフリクションロスを抑える三次元ブロー加工を採用。鍛造だからこそ成しえる軽量肉抜き形状。高強度を兼ね備え、チューニングに不可欠な性能を発揮します。過酷な使用条件下での鍛造への拘りは勝利への拘りです。



γPin height 28mm L32 only (Part number: RP-L3228-)

	Forged
	Racing high
	compression γ88.5 89 89.25 89.5
Manufacturing method	γ21x46mm Lightweight type
	28.0mm
Type Piston diameter	Pin diameter x length Pin height
Piston ring thickness	1.2mm x 1.2mm x
2.0mm Piston weight	290g / γ89 Valve recess depth IN 5mm EX 5mm (compatible with 46/38 valves)
Valve recess volume	3.8cc Connecting rod used KAMEARI 137.5mm Crank KAMEARI 85mm

γPin height 29mm For L28 to L31 only

(Product number: RP-L3029-)

	Forged
	Racing high
	compression γ86 86.5 87 88.5 89 89.25 89.5 90 γ21x46mm
Manufacturing method	Lightweight type 29.0mm
Type Piston diameter	Pin diameter x length Pin height
Piston ring thickness	1.2mm x 1.2mm x
2.0mm Piston weight	290g / γ89 Valve recess depth IN 5mm EX 5mm (compatible with 46/38 valves)
Valve recess volume	3.8cc Connecting rod used KAMEARI 137.5mm / 139.5mm Crank KAMEARI 83/85mm

Made in Japan

L28 modified L30 lightweight street piston (for L28 rod)



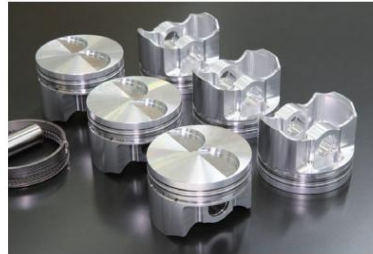
Price: γ130,000
 (Product number: SP-L30381-)

detail

Forged + Machined High
 compression γ88 88.5 89 89.5
 γ21x50mm 38.1mm
 •Manufacturing method •Type
 •Piston diameter •Pin diameter x length •Pin height
 1.5x1.5x2.8mm 334g IN 5.0mm
 •Piston ring thickness EX5.0mm 3.8cc L28 L28
 •Weight of piston alone
 •Valve recess depth
 •Valve recess volume •Connecting rod used •Crank used

Note: Genuine connecting rods require full flow processing. *Piston rings, piston pins, and circlips included

L24, L26, L28 86γ Lightweight street piston (for genuine rod)



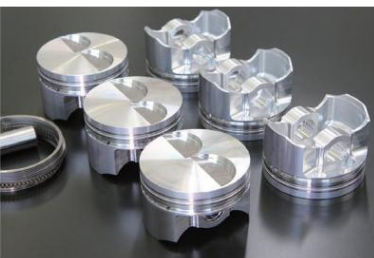
Price: γ130,000*86γSTD
 (Part number: SP-L2886-STD) *86γOS
 (Part number: SP-L2886-OS) Details

detail

Forged + Machined High
 compression γ86
 γ21x50mm
 •Manufacturing method •Type
 •Piston diameter •Pin diameter x length •Pin height
 38.1mm 1.5x1.5x2.8mm 320g IN 4.0mm EX4.0mm 2.1cc
 •Piston ring thickness
 •Weight of piston alone Genuine
 •Valve recess depth product (full flow processing)
 •Valve recess volume •Connecting rod used •Crank used

*There are two types of piston sizes: *86γSTD (85.93mm) γγγγFor L24 L26 boring *86γ0.05 oversize (85.98mm) γγγγFor L28 bolt-on
 Note: 85.97γ is a piston size intended for bolt-on use with the standard L28 cylinder bore. Please check the cylinder wear condition (bore size) before deciding to use.
 The piston size is a target value. It may vary slightly depending on the temperature.

L28 modified L30 lightweight street piston (for L20 rod)



Price: γ130,000
 (Product number: SP-L30355-)

detail

Forged + Machined High
 compression γ88 88.5 89 89.5
 γ21x50mm 33.5mm
 •Manufacturing method •Type
 •Piston diameter •Pin diameter x length •Pin height
 1.5x1.5x2.8mm 327g IN 5.0mm
 •Piston ring thickness EX5.0mm 3.8cc L20 L28
 •Weight of piston alone
 •Valve recess depth
 •Valve recess volume •Connecting rod used •Crank used

Note: Genuine connecting rods require full flow processing. *Piston rings, piston pins, and circlips included

L24, L26, L28 87γ Lightweight street piston (for genuine rod)



Price: γ130,000 (Part number: SP-L28381-87)

detail

Forged + Machined High
 compression γ87
 γ21x50mm
 •Manufacturing method •Type
 •Piston diameter •Pin diameter x length •Pin height
 38.1mm 1.2x1.2x2.5mm 327g IN 4.0mm EX 4.0mm 2.1cc
 •Piston ring thickness
 •Weight of piston alone Genuine
 •Valve recess depth product
 •Valve recess volume •Connecting rod used •Crank used

Note: Genuine connecting rods require full flow processing. *Piston rings, piston pins, and circlips included

L28 modified L31 lightweight street piston (for L20 rod)



Price: γ130,000
 (Product number: SP-L30335-)

detail

Forged + Machined High
 compression γ88 88.5 89 89.5
 γ21x50mm 33.5mm
 •Manufacturing method •Type
 •Piston diameter •Pin diameter x length •Pin height
 1.5x1.5x2.8mm 311g IN 5.0mm
 •Piston ring thickness EX5.0mm 3.8cc L20 L28
 •Weight of piston alone
 •Valve recess depth
 •Valve recess volume •Connecting rod used •Crank used

Note: Genuine connecting rods require full flow processing *Piston rings, piston pins, and circlips included

L24, L26 γ83 Lightweight street piston (for genuine rod)



Price: γ130,000 (Part number: SP-L2483-OS)

detail

Forged + Machined High
 compression γ83
 γ21x50mm
 •Manufacturing method •Type
 •Piston diameter •Pin diameter x length •Pin height
 38.1mm 1.2x1.2x2.5mm 302g IN 4.0mm EX 4.0mm 2.1cc
 •Piston ring thickness
 •Weight of piston alone Genuine
 •Valve recess depth product
 •Valve recess volume •Connecting rod used •Crank used

Note: Genuine connecting rods require full flow processing. *Piston rings, piston pins, and circlips included
 *Piston size (82.98mm)
 This piston size is intended for bolt-on use with the standard cylinder bore of L24.L26. Please check the cylinder wear condition (bore size) before use. Note: The piston size is a target value. It may vary slightly depending on the temperature.